



Erika's Lighthouse

A Beacon of Hope for Adolescent Depression®

Join Erika's Lighthouse as a



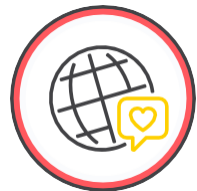
Professional Community Ambassador



Advocate

for Erika's Lighthouse programs as an official ambassador.

Change
the world one school at a time by promoting inclusive school cultures.



Learn

from a cadre of peers and our team to deepen your knowledge.

Volunteer
your time to support youth mental health around your state.





Join a nation-wide group of volunteers dedicated to promoting inclusive school cultures around mental health while advancing your career through professional development, presentations and thought leadership.



Empower Youth in Your State & Nationally

You have the power to empower. Youth around the country are facing mental health issues and in need of inclusive school cultures that embrace our four pillars: Classroom Education, Teen Empowerment, Family Engagement and School Policy & Staff.

By becoming a Professional Community Ambassador, you can help normalize conversations around mental health in schools across the country.

Multi-Disciplinary Collaboration & Learning

You can help unite schools across the country while learning from other professionals how your work intersects and supports youth mental health! Our network of ambassadors will be comprised of school-based professionals from health education, counseling and social work.

Not only will our ambassadors learn and grow, but you will have a role in shaping the future of our organization to better serve schools, students and families.



Be A Recognized Peer Leader

You are a champion, and Erika's Lighthouse is looking for emerging or active leaders in their profession that can promote our work among their peers.

As an ambassador, you can speak authoritatively about Erika's Lighthouse and act as a local liaison about the impact of our programs in your state.



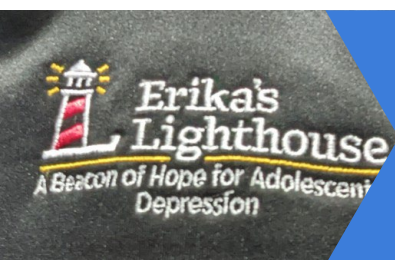
Your efforts will support student mental health throughout the country - but also offer you exciting benefits and recognition.

Enhance your professional network by collaborating with dozens of like-minded, passionate education professionals from around the country.



Receive ongoing training and support from the Erika's Lighthouse team on our philosophy, pillars and suite of programs.

Broaden your knowledge with professional development around youth mental health.



Unique swag from Erika's Lighthouse.

Access to other Professional Community Ambassadors and school professionals.



Complimentary registration to state and local professional conferences when you represent Erika's Lighthouse (up to \$200/yr).



JOIN US

What is a Professional Community Ambassador? Someone who is a(n):

- School-based health educator, counselor or social worker.
- Active or emerging leader in their specialty.
- Interested in professional development around mental health, inclusive school cultures.
- Willing to champion Erika's Lighthouse free programs and resources among local, state and national peers.
- Confident public speaker who is willing to promote Erika's Lighthouse no-cost programs and resources at local, state and national conferences.
- Enthusiastic about finding new opportunities to expand Erika's Lighthouse programming in more schools through professional networks and beyond.

Benefits

- Complimentary registration to state and local professional conferences when you represent Erika's Lighthouse (up to \$200/yr).
- Enhance your professional network.
- Receive ongoing training and support from the Erika's Lighthouse team on our philosophy, pillars and suite of programs.
- Broaden your professional development and knowledge around youth mental health.
- Access to with other Professional Community Ambassadors and school professionals.
- Complimentary swag.

Responsibilities

- Apply and present, at least annually, at your state's appropriate association conference (i.e., ASCA or SHAPE affiliate)
- Identify new opportunities to promote Erika's Lighthouse among peers and colleagues.
- Write one blog post a year for the Erika's Lighthouse website.
- Represent Erika's Lighthouse to media, educators and others interested in hearing a local perspective on Erika's Lighthouse.

I'M IN!

Type something...	Type something...
_____ Signature	_____ Name & Credentials
Type something...	Type something...
_____ Specialty (Health Ed/Counseling/Social Work)	_____ School
Type something...	
_____ Professional Accomplishments/Awards/Recognition	
Type something...	Type something...
_____ Email	_____ Phone
Type something...	Type something...
_____ Personal Address	_____ City, State, ZIP
Type something...	Type something...
_____ Gender (for attire)	_____ Shirt size (unisex)
Type something...	
_____ Shirt Size (by Gender)	

Please send a photo and two sentence bio to Katie Conklin at katie@erikaslighthouse.org along with this signed document.